

## Theme 2 Jobs, Skills & Prosperity

### MSG Programme Period 10 (Jan-Mar 2018) Performance Report

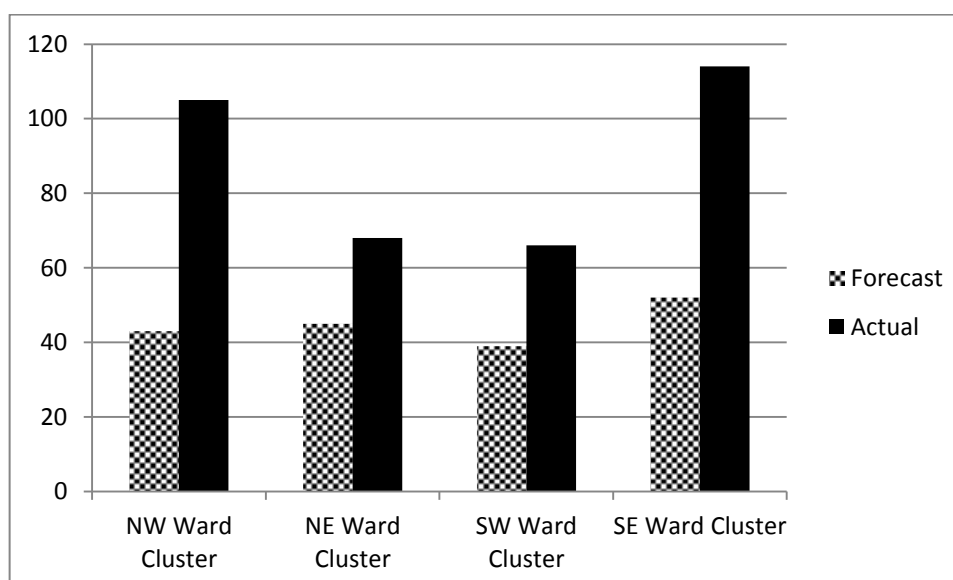
**Theme 2 – Jobs, Skills & Prosperity:** This theme focuses on seeking key outcomes including:

- Measurable increase in the numbers of people moved closer to the labour market and prepared for sustained employment.
- Reduce the numbers of residents in the borough with no qualifications or training
- Improved integration of pathway to work employment support services
- Reduction in numbers of residents negatively impacted by welfare reforms
- Minimisation of the number of residents facing housing repossessions
- Increase in the numbers of residents supported with addressing problem debts
- Increases in number of residents on low incomes receiving their correct benefit /tax credit entitlement
- Empowering residents and building resilience

## Routeways to Employment

### Geographical Breakdown

The table below shows the number of beneficiaries supported during the period January to March 2018 by Ward Cluster:



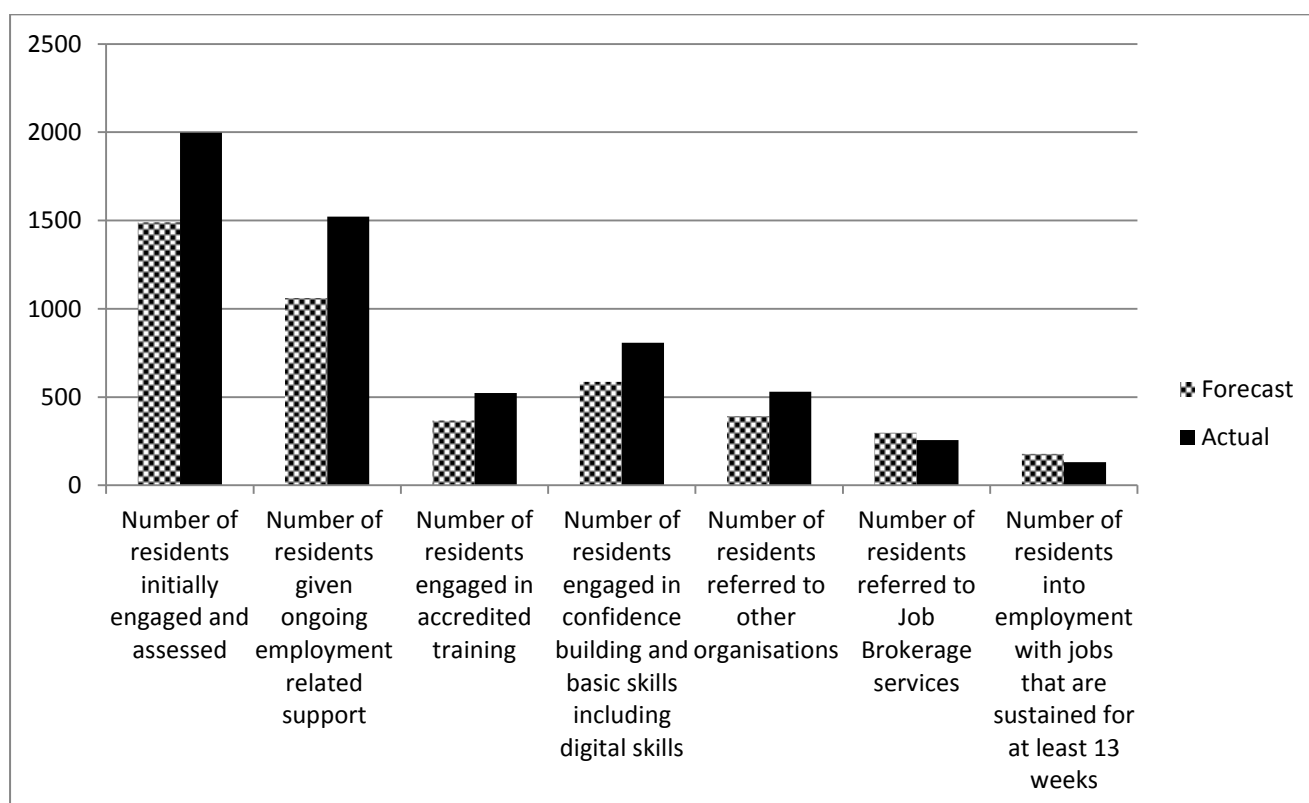
NW Ward Cluster	NE Ward Cluster	SW Ward Cluster	SE Ward Cluster
<ul style="list-style-type: none"> <li>• Bethnal Green</li> <li>• Spitalfields &amp; Banglatown</li> <li>• St Peter's</li> <li>• Weavers</li> </ul>	<ul style="list-style-type: none"> <li>• Bow East</li> <li>• Bow West</li> <li>• Bromley North</li> <li>• Bromley South</li> <li>• Mile End</li> </ul>	<ul style="list-style-type: none"> <li>• Shadwell</li> <li>• St Dunstons</li> <li>• St Katherine's &amp; Wapping</li> <li>• Stepney Green</li> <li>• Whitechapel</li> </ul>	<ul style="list-style-type: none"> <li>• Blackwall &amp; Cubitt Town</li> <li>• Canary Wharf</li> <li>• Island Gardens</li> <li>• Lansbury</li> <li>• Limehouse</li> <li>• Poplar</li> </ul>

### Routeways to Employment Project Portfolio – Place

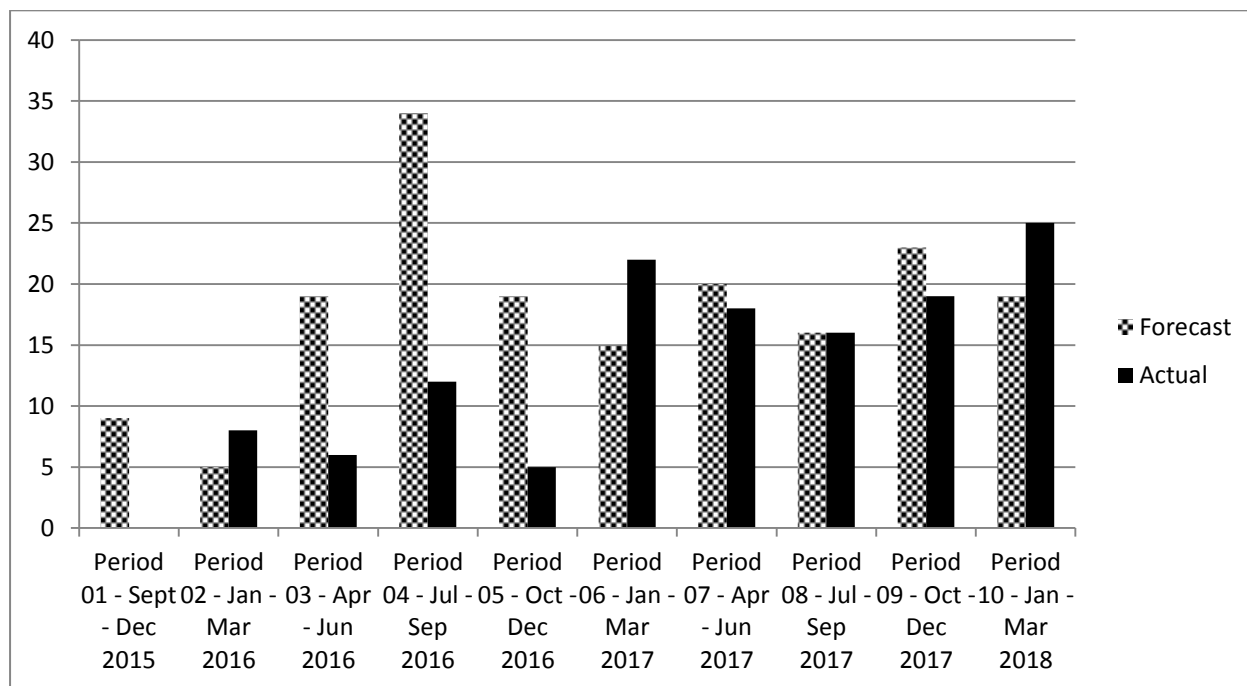
No. of live projects – Jan-Mar 2018	No. of projects classed as <b>GREEN</b>	No. of projects classed as <b>AMBER</b>	No. of projects classed as <b>RED</b>
9	9	0	0

There are 9 active projects in this category; all of which are classed as ‘Green’ and are on course to meet the agreed expenditure targets, service outputs and outcomes as indicated in monitoring reports received.

### Key Routeways to Employment outputs to date – Period 01 – 10



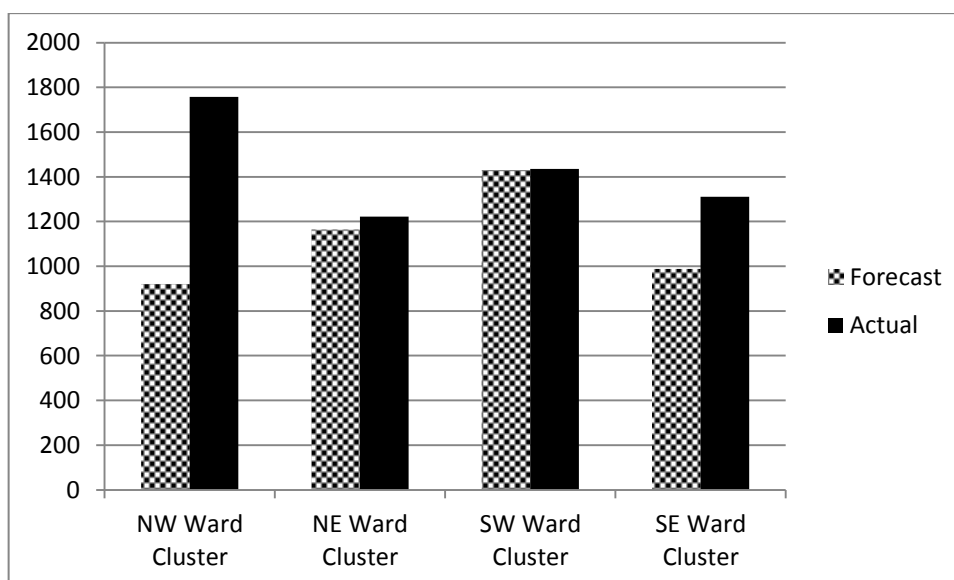
### Number of residents into employment – Period 01 – 10



## Social Welfare Advice Services

### Geographical Breakdown

The table below shows the number of beneficiaries supported during the period January to March 2018 by Ward Cluster:



NW Ward Cluster	NE Ward Cluster	SW Ward Cluster	SE Ward Cluster
<ul style="list-style-type: none"> <li>Bethnal Green</li> <li>Spitalfields &amp; Banglatown</li> <li>St Peter's</li> <li>Weavers</li> </ul>	<ul style="list-style-type: none"> <li>Bow East</li> <li>Bow West</li> <li>Bromley North</li> <li>Bromley South</li> <li>Mile End</li> </ul>	<ul style="list-style-type: none"> <li>Shadwell</li> <li>St Dunstons</li> <li>St Katherine's &amp; Wapping</li> <li>Stepney Green</li> <li>Whitechapel</li> </ul>	<ul style="list-style-type: none"> <li>Blackwall &amp; Cubitt Town</li> <li>Canary Wharf</li> <li>Island Gardens</li> <li>Lansbury</li> <li>Limehouse</li> <li>Poplar</li> </ul>

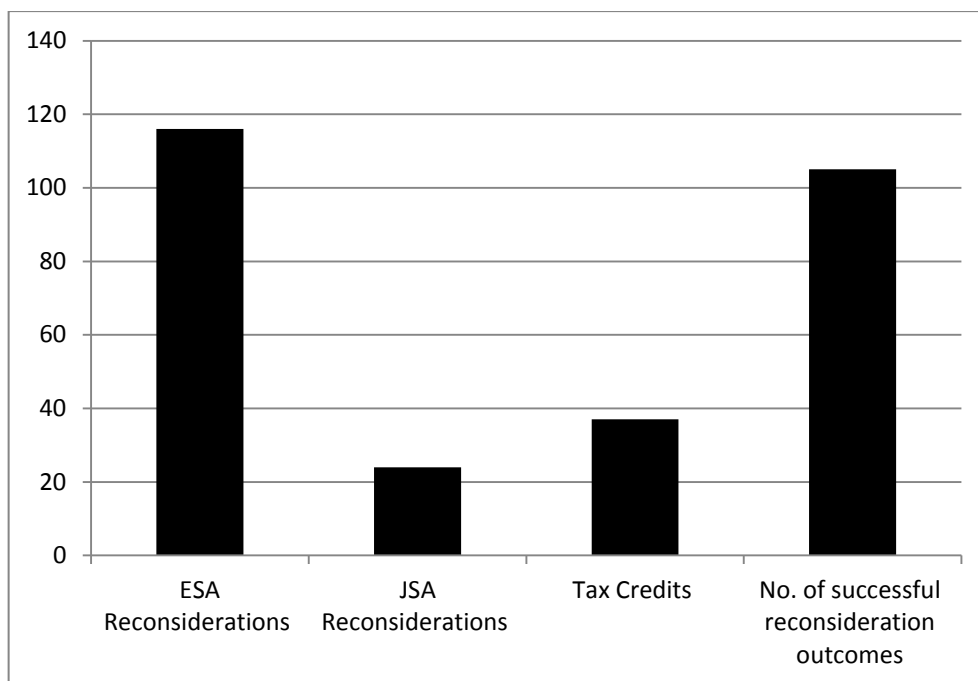
### Social Welfare Advice Services Project Portfolio – Place

No. of live projects – Jan-Mar 2018	No. of projects classed as <b>GREEN</b>	No. of projects classed as <b>AMBER</b>	No. of projects classed as <b>RED</b>
11	11	0	0

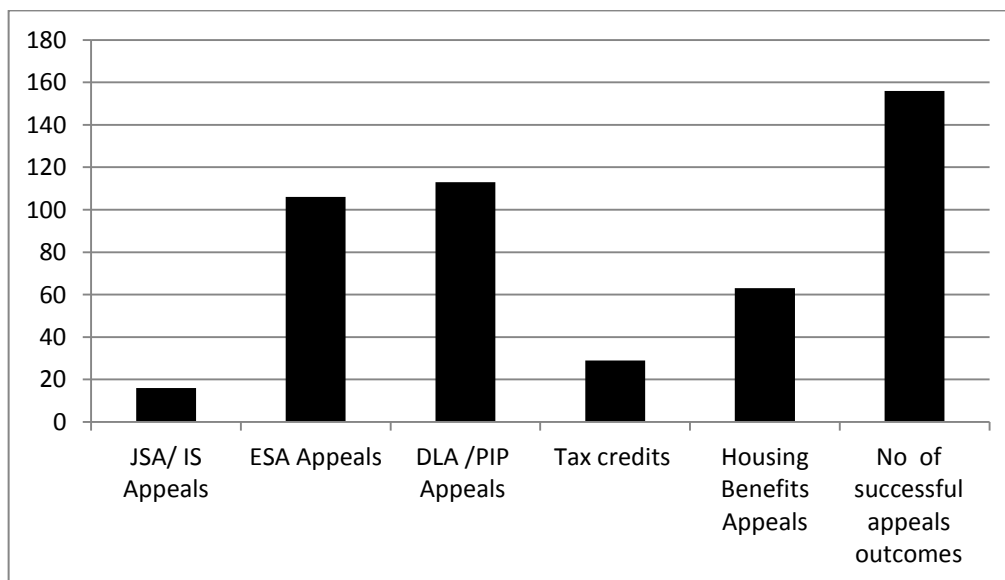
There 11 active projects in this category; all of which are classed as 'Green' and are on course to meet the agreed expenditure targets, service outputs and outcomes as indicated in monitoring reports received.

**Key Social Welfare Advice outcomes achieved in the quarter include:**

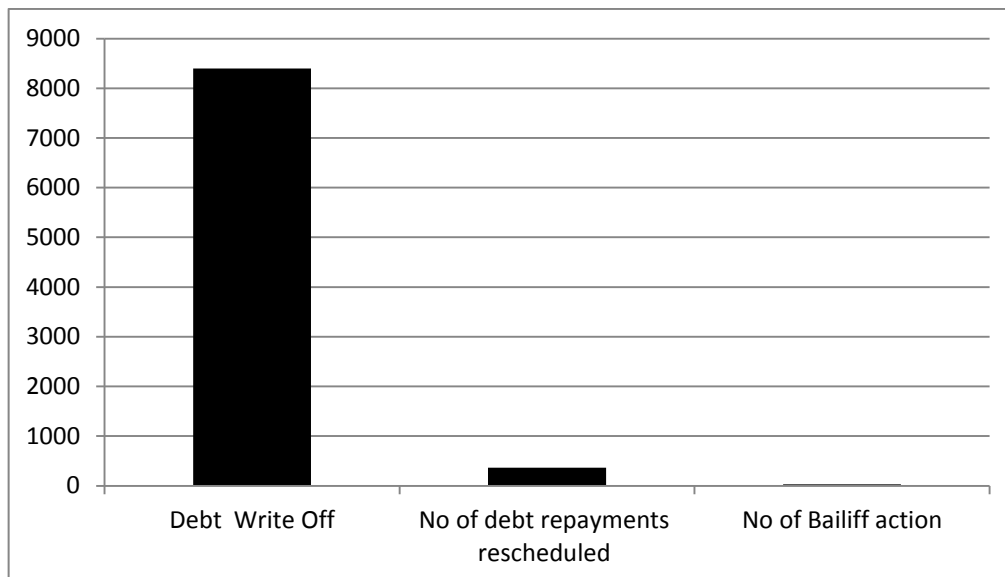
**Number of Reconsiderations**



**Number of Appeals**



### Debt Outcomes



### Housing Outcomes

